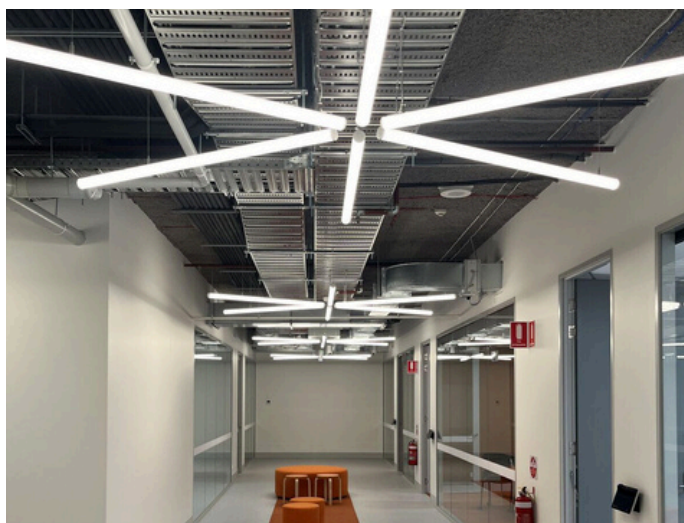


# RMIT Franklin Street Melbourne

Client	Scape Student Accommodation
Location	97 - 99 Franklin St Melbourne, VIC
Builder	Built
Electrical Contractor	Anova Electrical
Systems Integrator	mySmart Victoria
Project Stats	366 X zencontrol Sensors 148 X zencontrol Switches 46 X zencontrol Application Controllers



mySmart Victoria partnered with Lumen Resources to successfully complete the lighting system installation for the 5-star Green rated RMIT Student Accommodation at Franklin Street, Melbourne. The project involved the commissioning of an advanced zencontrol DALI-2 lighting system across eight floors, serving a 940-bed accommodation.

The zencontrol DALI-2 system integrates seamlessly with the Building Management System (BMS) to provide centralised, efficient control of both lighting and HVAC systems. Equipped with 300+ PIR sensors, the system detects occupancy to automatically adjust lighting and maintain optimal temperature in real-time, ensuring both energy efficiency and occupant comfort.

The project also includes customisable lighting scenes designed for different environments—such as study rooms, personal apartments, lounges, a cinema and more. Daylight harvesting further enhances energy savings by adjusting lighting based on natural light levels, maximising sustainability and reducing energy consumption.

