

## Samos Downlight Range

**Trunk Area Wash Series** LRTDHE03-T1-S / LRTDHE04-T1-S / LRTDHE06-T1-S



### FEATURES




- Adjustable head downlight ideal for targeted wall washing effect
- Standard and large sizes available with a broad range of wattage
- Ripple free dimming prevents visible flickering
- Commercial grade quality heat sink and installation springs
- Made with LM-80 certified COB LED chips
- Long life-span with low power consumption
- Active power factor correction
- Protections against overheating and short circuits, overloads and mains voltage spikes
- Amplitude modulation lighting improves camera recording
- Double isolated for zero earth leakage
- Pre-wired with a DALI twin lead for fast installation

# Samos Downlight Range

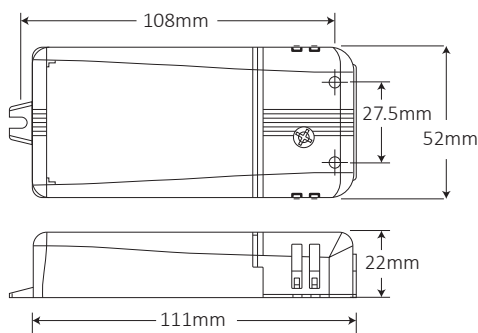
## Trunk Area Wash Series LRTDHE03-T1-S / LRTDHE04-T1-S / LRTDHE06-T1-S

### LUMINAIRE SPECIFICATION

SKU	DIAMETER	WATTAGE
LRTDHE03-T1-S	Ø 102mm	10W, 15W
LRTDHE04-T1-S	Ø 140mm	20W, 25W, 30W
LRTDHE06-T1-S	Ø 160mm	30W, 35W, 40W
Colour Temp	2700K, 3000K, 4000K, 5000K	
Beam Angle	 15°    24°    38°	
IP Rating	IP20	
Colour	White	
Dimmable	Yes, DALI	
Light Source Brand	Citizen/Philips COB	
Efficiency(lm/w)	85-95lm/w	
CRI	80 (90, 97 Option)	

### TECHNICAL SPECIFICATION

Driver Supplied	TCI Mini Jolly DALI-2
Rated Voltage	220-240VAC 50-60Hz
Working Temp	-25 ~ +45°C
In rush current	5A 50µs
Thermal Protection	= C.5.a.
Body Material	Aluminium
Warranty	10 years (5% Failure Rate)



### STANDARDS COMPLIANCE

CSA C22.2 no. 223 (2)	EN 61547
EN 50172 (VDE 0108)	EN 62384
EN 55015	EN 62386-101
EN61000-3-2	EN 62386-102
EN61000-3-3	EN 62386-207
EN 61347-1	UL 1310 (2)
EN 61347-2-13	VDE 0710-T14

